

2011



KENYA



**[MAISHA MISSION TRIP
GUIDE]**  **Maisha International Orphanage**
"Sharing Love and Compassion"

Notes (Handy place for questions as you review guide)

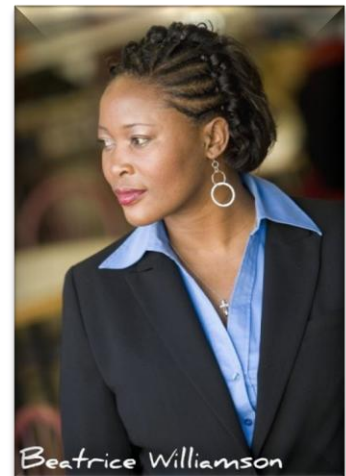


Team Maisha

Thank you for your desire to come alongside us as we reach out to and strengthen the villages and orphaned children in the Kisumu District of Kenya. Our volunteers who serve on missions teams are collectively known as "Team Maisha." This guide will help you maximize your experience on your journey to Kenya.

WHO IS MAISHA?

Maisha means LIFE and that's precisely what we bring to the orphans and widows of Kenya. By giving Maisha's founder Beatrice Williamson a scholarship for education, Anna Lanson began a legacy of hope. Anna gave Beatrice a chance to succeed in life and tell her story. At Maisha we continue that legacy by inspiring people to help people and strengthening communities by finding lasting solutions to stop poverty, hunger and disease. Doesn't every child deserve a chance to discover their full potential?



Maisha is committed to bringing hope to the hopeless and light to the darkness. In the Nyanza Province of Kenya, the silent epidemic of HIV/AIDS has stolen the lives of mothers, fathers, young and old, leaving one out of every three households headed by a child. According to Kenya's Department of Health, one out of every four adults in the Kisumu district is HIV-positive. Maisha's goal is to invest in the potential of 5,000 orphans within the next five years, giving them the tools they need to succeed. As we equip and train our staff and volunteers, they are able to create brighter futures for each person we serve. Maisha allows you the chance to put your passion into action.



Where and Who We Serve



Maisha serves in the village of Kadiju, an area more commonly referred to as Kano due to its location on the Kano plains. It is situated about 20 minutes by vehicle outside of Kenya's third largest city Kisumu. Being on the equator, the climate is tropical and humid. Daytime temperatures range between the mid-70's to 80's; nighttime between mid 60's to 70's. This rural area lacks modern conveniences like running water and electricity and the main source of transportation is on foot or bicycle. The area is home to the Luo tribe. Most of their homes and facilities are primitively made from clay bricks, concrete, tin roofs, and grass. Much of the land

in the village is used for farming and raising animals. Women farm the land with assistance from children and raise extended households of orphans due to the HIV/AIDS epidemic. As a result, over two-thirds of the village's population is children. An entire generation has been lost to the ravages of this disease and left the land and its people devastated. Despite the harsh circumstances, the people contain abundant joy. They sing songs, dance and laugh often. You will be welcomed with open arms, warm embraces, meaningful handshakes and of course a few songs and dances.

The village of Kadiju is governed by chiefs. Our local chief, Jenipher Atieno Kosome, is one of our closest allies in our effort to bring transformation to the community. Being one of very few women chiefs, she has a particular heart to see change for the present and future generations of children and works tirelessly for the rights of women.

Maisha International Orphanage serves children from newborns to teens, feeds over 350 children daily, provides scholarships for education, does community development projects, hosts economic empowerment training and provides home based care to people living with HIV/AIDS. The newly constructed Maisha Community Center, the first facility of its kind in Kadiju, is the hub of activity in the village. It is where the village elders gather, the feeding program operates daily and many classes and economic empowerment activities are held.



There is an ever-increasing population of orphans which Maisha supports in a unique manner. This was started by Beatrice's mother, Grace Ochieng or "Mama Grace" who was a schoolteacher. She began seeing the children falling asleep due to lack of food so she started bringing them home for lunch. Their numbers quickly multiplied and Mama Grace saw most of them had nowhere else to go. The children began being placed in homes of caregivers in the village, widows with a heart to serve. In this way they become a part of a family unit and home. They are given the opportunity for education, safety of a home, a warm meal and the love of a house parent. Mama Grace continues her patronage today as the Kenyan Director of Maisha.



How We Serve

Each mission week is action packed with lots of work projects and great interaction and relationship building time with the children and families we serve. The work projects are designed to improve the facilities, programs, and living conditions for the Kadiju village and the orphan homes. We are committed to ending **HUNGER** in Kadiju in 2011, be it physical or spiritual. Every project throughout the year will be geared toward meeting this basic need.

- Hope** Bible Studies and leadership training – “But seek first His kingdom and His righteousness, and all these things will be added to you.” *Matthew 6:33*
- Understand** Full health evaluations on all orphans including HIV and malaria testing to determine health status and special nutritional needs; establish medical records
- Nourish** Furnish and outfit dining hall in **Maisha Community Center** and transition location of **Maisha Feeding Program** where 350 orphans are fed daily; begin incorporating food and nutrition from Shambas of Maisha
- Grow** Expand **Shambas of Maisha** (Gardens of Life) by enriching soil and increasing crop yields to help sustain the Maisha Feeding Program
- Encourage** Visit village homes to minister and care for people living with HIV/AIDS in our **Living Positive** program
- Rebuild** Build **Maisha Homes**, single family dwellings with a house parent for the orphans to have a place to gather around the dinner table and begin establishing family units; build a computer classroom and base for wireless connections in the Maisha Community Center to facilitate training in horticulture and other areas via internet with experts from the U.S.; install solar panels, LED lights, water catchment and other basic infrastructure items; establish other training programs and microenterprise activities in the classrooms at the Maisha Community Center.

Each mission group has its own unique gifts and areas of expertise and we will be able to use those in specific ways to live out our mission to end hunger at Maisha in 2011.

Who Can Serve

Everyone is welcome to come alongside and serve with us on Team Maisha. Individuals, youth groups, women’s groups, church groups, and families have all served on short term missions. Lengths of service can be arranged from one week to three months. Long term mission assignments will be considered by interview.



Accommodations

Upon arrival in Nairobi, the group will be taken by van or bus to a Maisha approved facility in the city where you will share assigned rooms. Upon arrival at the facility, your bags will be gathered in a central area to be carried by a member of the Maisha staff by bus to Kisumu (due to weight restrictions on Kenya airlines). Please keep your carry-on and backpack at this point to transport with you by air. Early the following morning you will be transferred to the airport to fly to Kisumu, Kenya. Once there, you will be taken to St. Anna's Guest House, a securely gated facility where you will once again share assigned rooms. Your bags will arrive by the time you do or shortly after. There is a community room for daily debriefings and group time. In the dining hall, a full breakfast consisting of eggs, choice of meat, fruits and toast is served buffet style daily. Most lunches are taken in the field and dinners will be served again at the guest house. You may choose the option of dining out to experience the local culture at places like The Grill in downtown Kisumu, Kiboko (Hippo) Bay on Lake Victoria or even a fish shack for the famous fresh tilapia from the lake. This can be arranged by your group leader – each individual will be responsible for their own expenses. Your choice of one bottle of clean drinking water or soda will be provided at each meal and one bottle of water is supplied in your guest room each day at St. Anna's for brushing your teeth, taking medicine, etc. Please make sure to use only sealed bottled water and use straws with glass bottles at all times. You may purchase additional bottles of water/soda or items off the guest house menu, but are responsible for paying for them at time of purchase, no room charges please. Granola bars or travel-friendly snacks may be brought in your checked luggage. Many people find "American" snacks comforting to their tummies as they transition to food in Kenya.



There are showers, flush style toilets, mosquito nets, 220V British outlets and fans in all rooms. Housekeeping comes through daily to make up beds, clean bathrooms and restock bottled water and toilet paper; towels are replaced after several days so please hang for reuse. Laundry service is available for your personal items for an additional cost. Mama Regina is the manager at St. Anna's and she and her staff take good care of Team Maisha. Valuables may be given to her for storage in the safe – this should be coordinated by the group leader. Extra money, laptops, passports, etc. should be stored in the safe and removed as you need them. At the end of your stay in Kisumu, the group leader will collect tips to distribute to the service personnel at St. Anna's and your drivers. Tips are not required, but are recommended for their excellent service.



Kenya Fact Sheet

According to the CIA – The World Factbook:

Languages: English (official), Kiswahili (official), numerous indigenous languages

Total area: 224,961 sq mi (582,650 sq km)

Population: 41,070,934; birth rate: 33.54/1000; infant mortality rate: 52.29/1000; life expectancy: 59.48; density per sq km: 66

Median Age: total 18.9 yrs, male 18.8 yrs, female 19 yrs

Capital and largest city: Nairobi, 3.375 million

Monetary unit: Kenya shilling - per US \$ 85.75 (May 2011)

People living w/ HIV/AIDS: 1.5 million (2009 est.)

HIV/AIDS deaths: 80,000 (2009 est.)

Ethnic Groups: Kikuyu 22%, Luhya 14%, Luo 13%, Kalenjin 12%, Kamba 11%, Kisii 6%, Meru 6%, other African 15%, non-African (Asian, European, and Arab) 1%

Religion: Protestant 45%, Roman Catholic 33%, Muslim 10%, indigenous beliefs 10%, other 2%

Climate: varies from tropical along coast to arid in interior



Geography

Kenya lies across the equator in east-central Africa, on the coast of the Indian Ocean. It is twice the size of Nevada. Kenya borders Somalia to the east, Ethiopia to the north, Tanzania to the south, Uganda to the west, and Sudan to the northwest. In the north, the land is arid; the southwest corner is in the fertile Lake Victoria Basin; and a length of the eastern depression of the Great Rift Valley separates western highlands from those that rise from the lowland coastal strip.

History

The land became a British protectorate in 1890 and a Crown colony in 1920, called British East Africa. Nationalist stirrings began in the 1940s, and in 1952 the Mau Mau movement, made up of Kikuyu militants, rebelled against the government. The fighting lasted until 1956. Founding president and liberation struggle icon Jomo KENYATTA led Kenya from independence in 1963 until his death in 1978, when President Daniel Toroitich arap MOI took power in a constitutional succession. The country was a de facto one-party state from 1969 until 1982 when the ruling Kenya African National Union (KANU) made itself the sole legal party in Kenya. MOI acceded to internal and external pressure for political liberalization in late 1991. The ethnically fractured opposition failed to dislodge KANU from power in elections in 1992 and 1997, which were marred by violence and fraud, but were viewed as having generally reflected the will of the Kenyan people. President MOI stepped down in December 2002 following fair and peaceful elections. Mwai KIBAKI, running as the candidate of the multiethnic, united opposition group, the National Rainbow Coalition (NARC), defeated KANU candidate Uhuru KENYATTA and assumed the presidency following a campaign centered on an anticorruption platform. KIBAKI's NARC coalition splintered in 2005 over a constitutional review process. Government defectors joined with KANU to form a new opposition coalition, the Orange Democratic Movement, which defeated the government's draft constitution in a popular referendum in November 2005. KIBAKI's reelection in December 2007 brought charges of vote rigging from ODM candidate Raila ODINGA and unleashed two months of violence in which as many as 1,500 people died. UN-sponsored talks in late February produced a power sharing accord bringing ODINGA into the government in the restored position of prime minister. Kenya in August 2010 adopted a new constitution that eliminates the role of prime minister after the next presidential election.



Swahili 101: Hakuna Matata

Swahili is the national language of Kenya. English is taught as a primary language in the larger cities, but tribal languages are spoken in the rural areas. In the region where Maisha is located they speak Dholuo, the language of the Luo people, the third most populous ethnic group. The language is so melodious that other Kenyans find it fascinating to listen to and refer to it as the mother tongue.

English	Swahili	Dhuluo
Hello	Jambo	Msawa
Goodbye	Kwaheri	Oriti
How are you	Habari yako	Amosi
What is your name?	Jina lako nani?	Nyingi Ng'a
Thank you	Asante	Erokamano
I love you	Nakupenda	Aheri
Please	Tafadhali	Akwayi
You are welcome	Karibu	Machiengni/donji
Sorry	Pole	Mos
No problem!	Hakuna matata!	Onge chandruok
How much money?	Shilingi ngapi?	Pesa adi
Safe journey	Safari njema	Wuoth maber
Water	Maji	Pii
Good / Fine	Sawa / Sawasawa	Ber
Why?	Kwa nini?	Nan'go
Where?	Wapi?	Kanye
Who?	Nani	N'ga



Important Information

- You **MUST** have a passport with at least 6 months to expiration and Kenya visa to travel. It takes approximately six weeks to get a passport. Contact your local government office to obtain an application or go online to http://travel.state.gov/passport/passport_1738.html. A Kenya visa will be obtained for \$25-\$50 at the airport once you arrive in Nairobi.
- Immigration and Visa form answers: Reason for visit – Tourism; Address in Kenya - Maisha Orphans and Widows, P.O. Box 4762, Kisumu, Kenya
- Money Tips:
 - We suggest you bring **cash only** and a minimum of \$200 for airport meals, Kenyan visa, extra drinks/food, souvenir shopping and extra bag/overweight fees
 - Carry passport and cash in a safe place on your body in special travel pouch
 - Money must be crisp and clean with no tears. We can only exchange newer (2007 and newer) \$50 and \$100 bills! Smaller bills will not be exchanged. We will exchange for you. Credit/Debit cards may be used, but please be aware of risks and precautions associated with international use. Traveler's checks cannot be exchanged. Insurance and frequent flyer cards are good to carry as well. Please be sure to contact your bank/credit card companies to notify them of your travels plans.
- Due to cultural considerations ALL shorts (male and female) must be at least knee length. No tank tops, midriffs or spaghetti strap shirts. Please keep safety and modesty in mind as you pack for the trip. Clothes and shoes may be ruined from work projects.
- Communication to the U.S. is limited. Mission participants may bring their own cell phone, but caution, fees may be excessive and service is not guaranteed – check with your provider. Maisha may provide time at a cybercafé to access your email. You may also bring a laptop with wireless connection that can be used to update family members and supporters of your group's work. We encourage you to submit journal entry blogs as your trip progresses. A wireless USB stick or connection at Maisha may be available during free time, but connections are not always reliable. No news is good news!
- If you have a medical condition, please consult your doctor before traveling.
- Pictures and videos: We recommend bringing a still and/or video camera to capture the beautiful children in the orphanage and village and the scenery in Kenya. All media will be compiled at the end of each trip and may be used by Maisha and shared with other mission participants.
- Traveler's health insurance may be purchased by each mission participant or as a group.
- Maisha recommends that each mission participant consult his/her doctor regarding international travel and immunizations. See CDC recommendations - <http://wwwnc.cdc.gov/travel/destinations/kenya.htm> and Oklahoma County Health Department <http://www.occhd.org/health/immunizations>
- Post trip – coming home can be a difficult adjustment. Don't stop serving. You can help your team find service opportunities through your church or school.
- Security – There are always risks when you travel to third world countries and that is why we take precautions when you visit our facilities. While in Kenya you will travel by bus or vehicle driven by Maisha staff or hired driver. Your housing in Nairobi and Kisumu will also be secure 24 hours a day with guards. We also take simple precautions by traveling as a group and not letting group members venture off alone. Please do not bring nice jewelry or watches for your safety in public.
- If you bring anything that needs electricity, you will need an electrical adapter. For more info see http://www.adaptelec.com/index.php?main_page=document_general_info&products_id=213



In case of emergency, you can be reached at:

St Anna's Guest House

Tel: 011 254 572 024792

Cell: 011 254 734 600119

Maisha Orphans and Widows

Cell: 011 254 735 531445

Beatrice Williamson

Cell: 011 254 729 640061

Personal Packing List

- Current Passport/Visa, 2 extra passport photos (Please carry \$25-\$50 for Visa at the Kenya airport in the form of two twenties and two fives, clean newer bills that are not creased or torn)
- Please add name tags to all your luggage and place a copy of passport photo/signature pages in ALL bags and daypack
- Extra Spending Money - \$200 suggested
- Traveler's immunization card and malaria tablets are recommended (malaria tablets may be purchased in Kenya)
- Bible, journal, notebook (the children love to write you notes & always ask for pens/paper to do so)
- Only for those staying all summer - towel, washcloth, full sheets and full light blanket
- Duffels/suitcases (50 lb max per bag, 2 bag limit) - one for personal gear and the other for donated supplies, a carry-on and a backpack *Note -new rules for bag charges may apply
- Backpack or day-pack (22 lb max) Day pack supplies should include: Hand sanitizer, wet wipes, water bottle, flashlight, sunglasses, toothbrush/paste, rain poncho/small umbrella, sunscreen, lip balm, insect repellent, extra t-shirt, undies, personal medicines, travel sized first aid kit, camera, earplugs for light sleepers, hard candy, granola bars and travel-friendly snacks
- Clothes – make sure to pack 1-2 days change of clothes and underwear in your carry-on
 - Comfortable travel clothes...it is a long flight
 - Lightweight long sleeve shirt and long pajama bottoms for evenings
 - T-shirts and cargos/scrubs – easy to wash, lightweight, quick dry is best (shorts may be worn at guest house, but please wear longer pants/capris to village)
 - Comfortable shoes/sandals (closed toe durable sole recommended), 1 extra pair in duffel
 - Socks, underwear, and swimsuit
 - Hat/visor, bandanas or scarves (great when wet and wrapped around neck in heat)
 - Sweatshirt or jacket and raingear- poncho, rain jacket or small umbrella
 - One nicer outfit for church, decent length skirt or trousers for ladies acceptable
- Personal prescription medicine in original containers (please inform trip leader on application)
- Anti-diarrhea- Imodium or Pepto Bismol; Ibuprofen or your recommended pain killer
- Personal toiletries - limit to only necessary non-scented hygiene products
- Camera and film or memory sticks and battery charger – a power strip is recommended if you need to charge multiple items like camera, phone, laptop, etc.
- Flashlight and extra batteries
- Watch/Alarm Clock – even if you don't wear one at home you'll need one here, an inexpensive watch makes a great gift you can leave behind

We will provide a list of needs for the ministry so that group members can collect donations to bring with them in their second piece of luggage. A date will be set for a packing party approximately one week before travel to which all group members bring the collected supplies and extra bag to distribute, pack and weigh.



Team Maisha Itinerary Sample

- Day 1** In flight transit to Nairobi, Kenya
Day 2 Arrive in Nairobi late & transfer to Maisha approved facility
Day 3 Early am transfer by air to Kisumu/St. Anna Guest House/ Buy supplies
Day 4-11 Mission Activities at Maisha
Day 12 Team departs Kisumu - transfer to Nairobi by air
Free Day in Nairobi w/ day room at Maisha approved facility
Hotel/Lunch at Carnivore/Depart for airport mid-evening
Day 13 Arrive in the USA



Expenses – Please note these are the estimated expenses for a standard 13 day trip; prices will vary as to actual number of days, time of year, airfare, etc.

- \$ 240 Round Trip Airfare from Nairobi to Kisumu within Kenya
- \$ 330 Ground Transportation
- \$ 80 Lodging in Nairobi
- \$ 350 Lodging in Kisumu
- \$ 150 Food
- \$ 200 For development project while at Maisha
- \$ 250 Non-Refundable Deposit
- \$ 1600 Total Expenses per person before airfare

The total expenses of \$1,600 as shown above are exclusive of airfare. You may purchase your ticket with the group for an approximate total expense of \$3,250. The air tickets range from \$1,650 to \$2,500 depending on the time of purchase. Any difference is added to your total expense when airfare is purchased.

Expenses not included in this total include travel documents such as passport, Kenyan visa, airport meals, additional drinks/food, immunization fees, extra bag/overweight charges, tips and other extras such as shopping for souvenirs or additional days of extended travel.

As you fundraise for your mission trip, your donors may make tax deductible contributions directly toward your trip expenses online at: <https://www.registrationfactory.com/v3/?EventUUID=3C86323A>

Make sure they fill in the field to direct donation to your First & Last Name Mission Trip. They may also mail a check to Maisha International Orphanage, P.O. Box 570, Oklahoma City, OK 73101. Once again make sure they designate your First & Last Name Mission Trip on memo line of check.

Hand-crafted goods made by the Maisha Widows, such as recycled paper necklaces and bags, are available for use as fundraisers. Your extra bag for mission supplies may be used on the return trip to replenish these goods. Have your group leader contact us for more information.



Team Maisha Application

Last Name: _____ First Name: _____ Middle Name: _____

Nickname: _____ Name as it appears on passport: _____

Street: _____ City: _____ State: _____ Zip: _____

Home Phone: _____ Work Phone: _____ Cell Phone: _____

Email: _____

By which method do you prefer to be contacted?

- Age Group: Under 18
 18-24
 25-34
 35-49
 Over 50



Mission project for which you are making application: Country _____ Date _____

Occupation: _____

International Travel Experience: _____

Why are you interested in volunteering with Maisha International Orphanage? _____

How did you learn about Maisha volunteer opportunities? _____

What is your current knowledge of the purpose of Maisha? _____

What additional information would you like to learn about Maisha? _____

T-shirt size (Unisex) S - M - L - XL - 2XL - 3XL (circle one)

Is your deposit of \$250 submitted? Yes / No



Have you had a *recent* illness (in last year)? Yes / No / When? _____

Explain: _____

Do you have any allergies to food, drugs, insect bites or stings? Yes/ No If yes, what? _____

Do you have any chronic medical conditions? Yes / No

Explain: _____

Do you take any medications? Yes / No Please list ALL: _____

Immunizations and Dates:

Tetanus/Diphtheria Booster _____ Hepatitis A _____ Hepatitis B _____ Typhoid _____

Do you have any physical limitations or disabilities that would affect you in conditions such as extreme heat or cold, high elevation, limited food choices, etc.? Yes / No Explain: _____

Have you ever been treated or hospitalized for a mental or emotional condition? Yes / No

Explain: _____

In case of emergency, notify:

Name _____ Day phone _____ Evening Phone _____

Relationship: _____ Address: _____

Insurance Company: _____ Policy & Group # _____

Phone (____) _____

Name and Telephone Number of your Physician: _____

RELEASE OF LIABILITY

I, _____ volunteer to participate in the mission with Maisha International Orphanage, a project of United Charitable Programs. I understand that Maisha International Orphanage and its volunteers assume no liability for any personal harm or illness or for loss or damage of any property that may come to me while serving as a mission volunteer, and I, my heirs, and my personal representatives and assigns, hereby absolve Maisha International Orphanage and their staff and volunteers and hold them harmless from any claim or demand that I, my heirs, my personal representatives or assigns might conceivably assert for any such harm, illness, loss or damage. I understand Maisha may use any images or videos I take while on the mission. I intend to be legally bound by this statement.

I do / do not (circle one) approve to let my contact information be shared with other missionaries participating on this trip.

Volunteer Name: _____ Volunteer Signature: _____ Date: _____



Trip Leader Information

Planning Timeline

9 Months Before	Secure a week by calling Maisha at 800.518.0255 ext. 6.
8 Months Before	Advertise your trip and schedule an informational meeting to get participants interested. Take sign-ups and send out informational packets.
7 Months Before	(Optional) Set-up fundraising events for your group. Remind participants to begin receiving their vaccinations.
6 Months Before	Finalize reservations with us. Arrange airline reservations.
4 Months Before	Promote mandatory pre-trip meetings for group members.
3 Months Before	Contract and deposit is due. Conduct 1st mandatory pre-trip meeting.
2 Months Before	Balance of Maisha fees and travel documents due.
1-2 Weeks Before	Conduct final mandatory pre-trip meeting and pack donation bags.
Day of Departure	Meet at the airport 2-3 hours before departure time. Have a great trip!
After the trip	Have a group get together and invite immediate families and friends to hear stories and see pictures of the trip. Share what you have seen and think of ways to get others involved. Plan a trip in the future!

Pre-Trip Meetings

Informational Meeting

- Show Maisha video
- Pass out informational brochure
- Begin sign-ups and set sign-up deadline
- Consider inviting Maisha staff to come and answer questions

Pre-Trip Meeting #1

- Pass out all documents and have participants fill them out at the meeting
- Minors must have both parents sign the Permission for Minors to Travel to Kenya form
- Discuss other materials provided by Maisha and answer questions.
- Collect the deposit from each participant.

Pre-Trip Meeting #2

- Collect any documents missing from participants.
- Discuss final travel plans.
- Pack donation bags and ask participants to bring bags to the airport.



Traveler's Cheat Sheet

Print a copy of this sheet to carry with your documents when you travel!

Don't Forget Items

- Passport and Photo copy of your passport kept in a carryon bag
- Medication- Keep in your carryon bag
- Parent Consent Form for Minors
- Copy of your Itinerary with Airline Rewards Number
- Cash (Crisp Bills in large denominations)
- Health and Insurance Information for Travelers (if you are the Group Coordinator)
- To call your bank/credit cards to report all travel locations/dates, including layover cities

Lost Baggage Reporting

- Know what items are in each of your bags to be able to give a good description of the items missing.
- When you check your luggage when departing U.S. and Nairobi on your return you will receive a luggage claim ticket attached to your air ticket stub. Your luggage will be checked through to your final destination. This ticket is important – you must have this to track your luggage should it get lost.
- Address to put on Missing Luggage Form:
Attn: Regina
St Anna Guest House
P.O Box 19100-40100
Millimani Tom Mboya Street Kisumu
Tel: 011 254 572 024792
Cell: 011 254 734 600119

Information for Alien Forms

- Reason for travel - Tourism
- Address of where you will be staying – same as above
- **Note: You will likely be questioned about your reason for travel when you go through Kenyan immigration. If the official continues to press this point, continue to answer - tourism and visiting my friends.**

Important Contact Numbers

St Anna's Guest House

Tel: 011 254 057 2024792

Cell: 011 254 734 600119

Maisha Orphans and Widows

Cell: 011 254 735 531445

Beatrice Williamson

Cell: 011 254 729 640061

***Note – if dialing numbers within Kenya, simply replace the 011 254 at the beginning of each number with a 0**

